

HUSABERG FRONT TANK FITTING INSTRUCTIONS

IMPORTANT!

Pre-fitting Instructions for Safari Fuel Tanks

1. Rinse tank out with a small amount of petrol and then discard the petrol. This needs to be done to remove any plastic trimmings that may be left in the tank after manufacturing.
2. Before attaching the screws and bolts to the brass inserts, insure that an anti-seize compound – grease will do – is applied to the threads. Do not use thread retaining compounds. If there is a risk of the screws and bolts working loose, use lock wire to secure them – mainly for endurance competition events
3. Recommendation: As with all fuel injection systems clean fuel is a must for continued trouble free operation, therefore always ensure all parts are clear before re-assembly

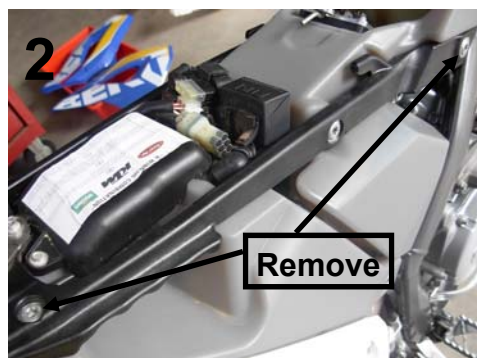
MOUNTING MATERIALS

2	Tank mounts rear lower	1	M8x25mm yellow zink hex coupler
2	Rear frame mount (L&R)	6	12x6mm hex bolts
2	Tapered spacers	4	25mm rubber washers
1	Cross brace (4 components)	1	Fuel tap block
1	Tank adapter	3	Fuel taps & O-rings
1	Large O-ring	1	Fuel hose cut to length - 83.5cm, 21cm, 24cm
2	20x6mm hex bolts	1	T piece
2	25mm s/s washer	3	Fuel hose clamps
4	M6x12mm button head socket screw	1	Filler cap & breather hose
4	M6x12mm flat socket counter sunk screw	2	8mm flat washer
2	M8x20mm button socket Zp	4	6mm flat washer
2	M8x30mm button socket Zp	4	Cable ties
			Radiator packing

FITTING INSTRUCTIONS

Removing & reinstalling the original fuel tank

1. Remove the seat and tank side covers
2. Disconnect the fuel pump wiring and fuel lines at the dry brake **Photo 1**
3. Remove the air filter and cover the opening with a cloth to prevent dirt from entering the throttle body
4. Remove the rear and front sub-frame bolts **Photo 2**
5. Remove the front tank retaining the bolt, remove the fuel tank/sub-frame assembly
6. Drain the fuel tank and remove the fuel pump housing **Photo 3** (photo shows fuel block mounted)





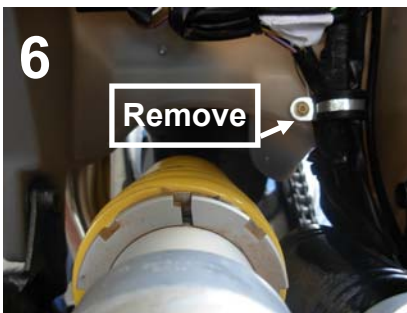
Fuel Tap Block

7. Cut out the template at the end of these instructions and use it to drill the fuel pump housing. Drill progressively from 3mm to 9mm. **Accurate hole placement is IMPORTANT**
8. Using a long 5mm allen key fit the supplied drilled bolt
9. Fit the supplied O-ring over the bolt on the outer side of the fuel pump housing
10. Fit fuel tap block, tighten and position as per **Photo 3**
11. Refit the fuel pump housing ensuring the self tapping screws follow the original threads
12. Fit the fuel tap ensuring the O-ring is correctly seated (refer to photo 3 for fuel tap positioning)



Safari Tank Cross Brace Mounts

13. Remove the radiator guards and radiator mounts bolts
14. Position the cross brace mounts over the radiator mounts with the foam facing the frame **Photo 4**
15. Refit the radiator mount bolts
16. Adhere the lower radiator protection strips **Photo 5**
17. Refit the radiator guards



Safari Tank Mounts

18. Remove the wiring loom clamp **Photo 6** and position the wiring slightly to the left

Now is a good time to check the seal on the fuel tap and block. Ensure the tap is turned off and add a small amount of fuel. Looking up past the rear shock will allow you to see and check the tap and block.



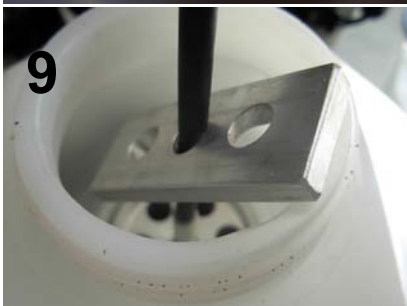
19. Refit the main tank ensuring the air cleaner seal is correctly seated
20. Separate the supplied mounting plates and fit the rear safari tank mounts with the supplied bolts and tapered spacers to the front of the sub-frame, align as per **Photo 7**, Fit square plate using the 2 counter suck screws to the left and right of the tank with the slotted holes facing downward.



21. Refit the rear sub-frame bolts and the main tank retaining bolts **Photo 2**

Safari Tank Instillation

22. Fit the supplied adapter to the main tank filler
23. Grease and fit the supplied O-ring **Photo 8**





24. Guide the Safari Tank over the adapter and ensure the O-ring is seated in both tanks
25. Install the flat plate over the guide adapter **Photo 9**
26. Install the notched plate over the guide and seat on the flat plate **Photo 10**
27. Fit the supplied flat washer and long nut over the guide to the stud
28. Start the nut and tighten it until the tanks are fully contacted and the fittings are fully seated, then tighten $\frac{1}{2}$ to $\frac{2}{3}$ of a turn



29. Loosely bolt the rear mounts to the tank mounts noting that there is some adjustment needed for alignment
30. Bolt the cross brace to the Safari Tank ensuring the correct positioning of the washers **Photo 11** tighten until rubber washers are firmly compressed (do not over tighten, it will destroy the rubber washers)
31. Tighten all mount bolts

DO NOT OVER TIGHTEN
This tension will need to be checked 2 to 3 hours after filling the tank with fuel.



Fuel Line

32. Remove the bash plate
33. Position the fuel lines so the T piece is at the cam shaft oil line fitting
34. Fit the 24cm fuel line to the left tap and run it between the rocker cover and the frame, the 21cm fuel line goes to the right tap
35. Remove the chain guide/sprocket guard and drill a 3mm hole as shown in **Photo 12**
36. Feed the cable tie through the hole and refit the chain guide/sprocket guard
37. Route the 83.5cm fuel line as shown in **Photo 13** and connect to the fuel tap block
38. Secure the fuel line with cable ties as shown in **Photo 14**
39. Refit the bash plate



Re-assembly

40. Remove the cloth from the air cleaner and refit the element
41. Refit the seat
42. Check that all of the fittings and hoses are secure and that the fuel line runs neatly and does not protrude. Put a small amount of fuel in the tank and check for leaks.

FUEL PUMP HOUSING DRILING TEMPLATE

+

PILOT DRILL 3MM